

UWS Series Solenoid Valve

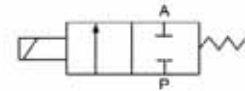
Stainless Steel 304S Body, Two Way Normally Closed



UWS-20



UWS-40



UWS - 15

F

DC24V

D

Specification Code

UWS : Two position two way solenoid valve (direct drive type)

Joint Pipe Bore

10 : 3/8"	35 : 1 1/4"
15 : 1/2"	40 : 1 1/2"
20 : 3/4"	50 : 2"
25 : 1"	

Initial Estate

Blank : Pipe joint type

F : Flange type

Standard Voltage

DC12V
 DC24V
 AC24V 50/60Hz
 AC110V 50/60Hz
 AC220V 50/60Hz

Wiring Form

Blank : Lead wire type

D : Join connector

E : Blast-proof coil

G : Water-proof coil

UWS Series Solenoid Valve Stainless Steel 304S Body, Two Way Normally Closed

Specification							
Model	UWS-10	UWS-15	UWS-20	UWS-25	UWS-35	UWS-40	UWS-50
Working Medium	Air, Water, Oil, Gas						
Motion Pattern	Direct Drive Type						
Type	Normal Close Type						
Aperture of Flow Rate (mm)	16	16	20	25	35	40	50
CV Value	4.8	4.8	7.6	12	24	29	48
Joint Pipe Bore	3/8" 1/2"	3/8" 1/2"	3/4"	1"	1 1/4"	1 1/2"	2"
Operation Fluid Viscosity	20 CST (below)						
Working Pressure (kgf/cm ²)	Water: 0 ~ 5, Air : 0 ~ 7, Oil : 0 ~ 5, Gas : 0 ~ 7						
Max. Pressure Resistance (kgf/cm ²)	10						
Operating Temperature Range (°C)	-50 ~ 80						
Voltage Range	± 10%						
Material of Body	Stainless steel 304S						
Material of Oil Seal	NBR, EPDM VITON						